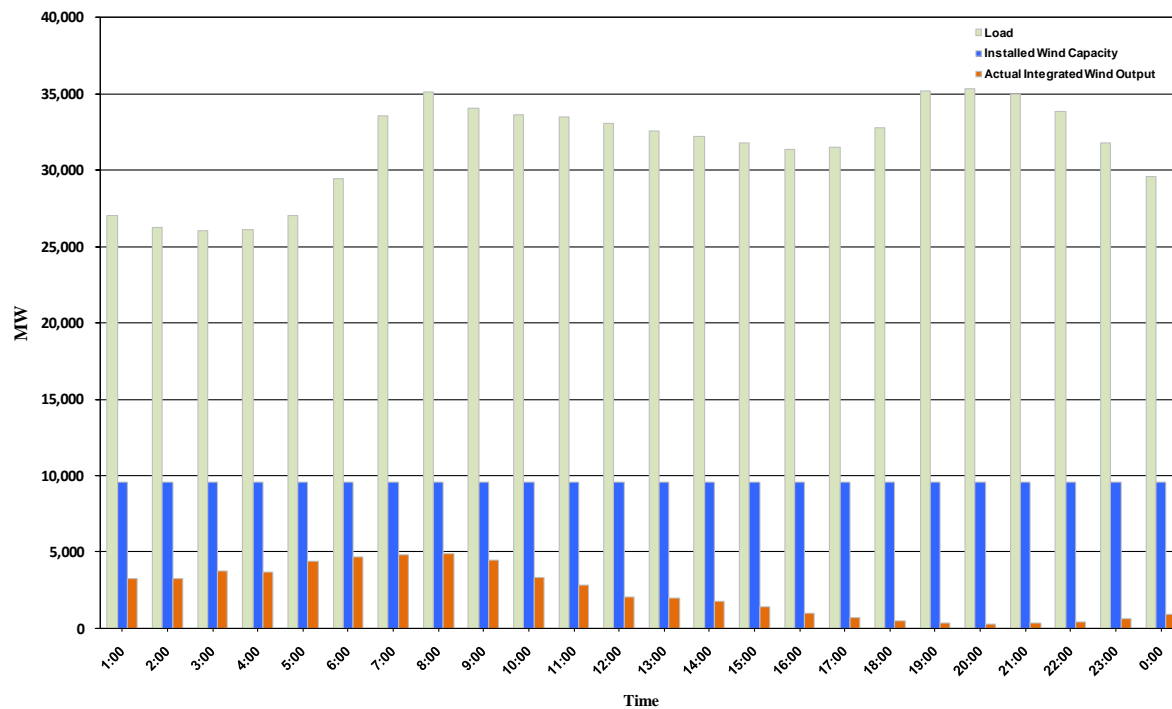




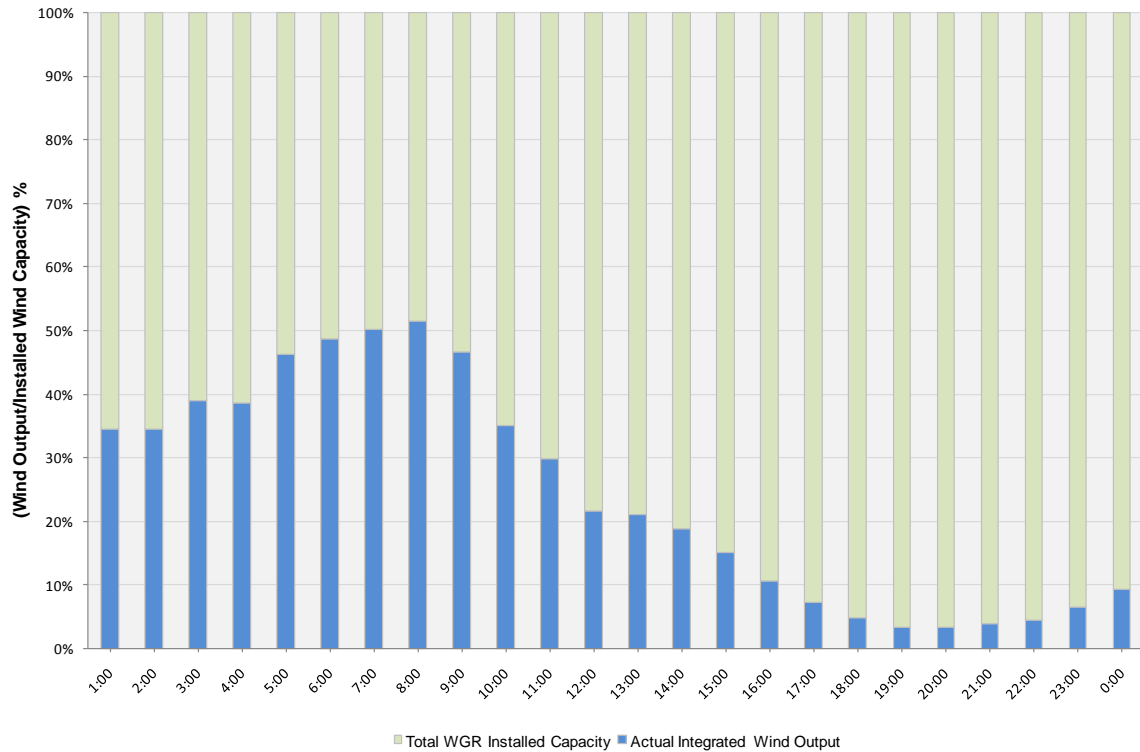
ERCOT Grid Operations Wind Integration Report: 01/05/11

Peak Load	35,300 MW
Load Peak Hour	20
Wind Record 12/11/10	7,227 MW
Max Wind Value	5,029 MW
Wind Peak Hour	07:26:32
Wind Integration %	14.19

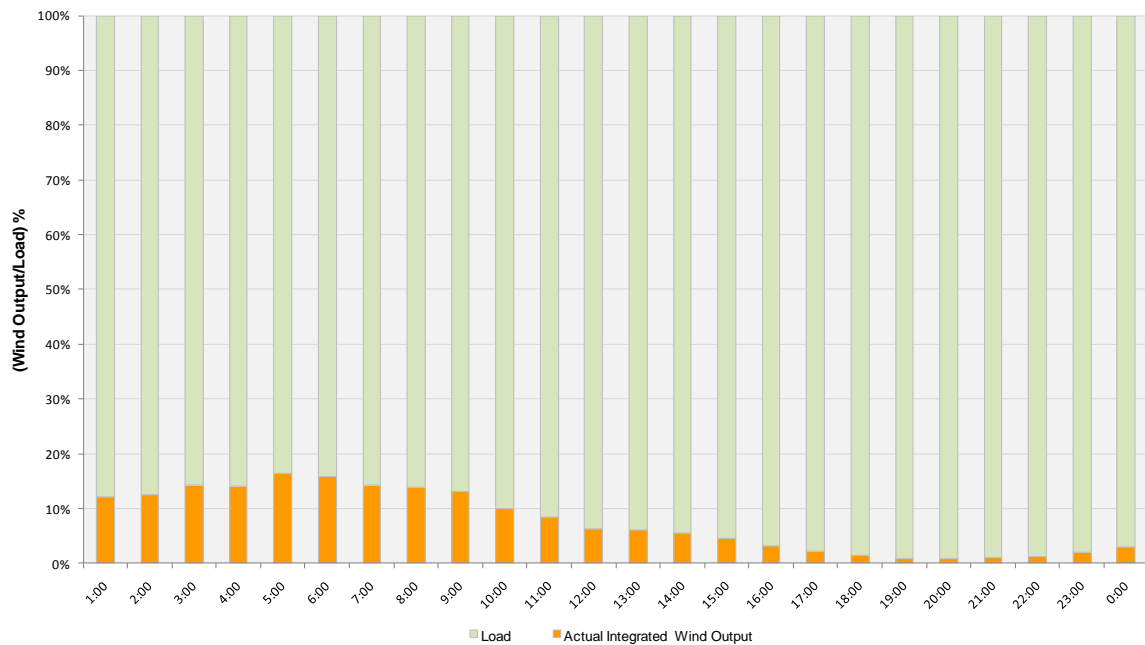
Hourly Average Actual Load vs. Actual Wind Output
01-05-2011



Actual Wind Output as a Percentage of the Total Installed Wind Capacity
01-05-2011



Actual Wind Output as a Percentage of the ERCOT Load
01-05-2011



ERCOT Load vs. Actual Wind Output 12/29/10 - 01/05/11